

Replacing a standard thermostat on our German heaters

1) **Disconnect heater completely from power supply**

2) Remove lid, loosen thermostat end unit holding screw. Gently separate end unit.

3) Disconnect terminal block centre connection earth and side connections. Remember for later re-assembly these can be any way round (both black) but earth must be in centre.

4) Remove thermostat end unit from radiator.

5) Gently lever off white control from spindle.

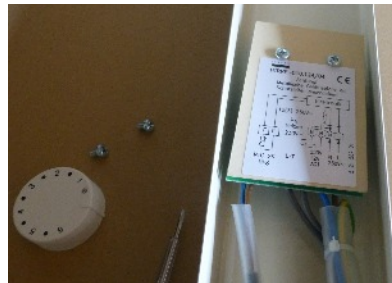
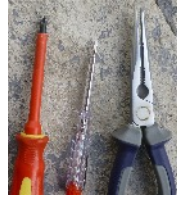
6) Undo two screws revealed.

7) Carefully turn unit to reveal thermostat unit now loose inside.

8) Carefully turn thermostat itself over to reveal electronics and terminal connections.

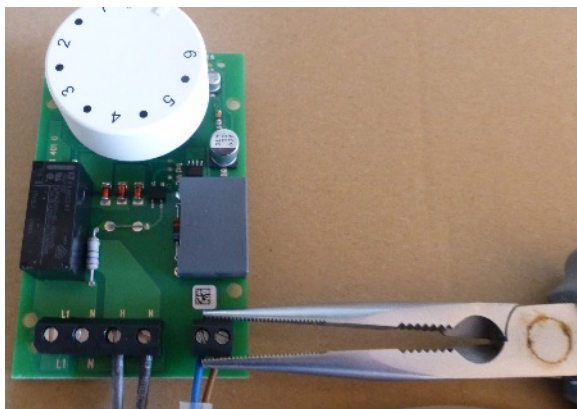
9) Note terminal connection colours and detail on paper. Disconnect six cables from the two terminal blocks on thermostat. Handle gently, see below.

10) Reverse above with new thermostat for assembly



Left:- Usual replacement thermostat supply. All connected cables should usually be removed to facilitate easier connection to existing wires in thermostat end unit. No sensor has failed us in the last seven years!

Below:- Terminals are delicate and easily moved on circuit board. Hold terminals gently but firmly when loosening or tightening connections.



PLEASE RETURN BROKEN THERMOSTAT TO US SO IT CAN BE RETURNED TO MANUFACTURER FOR ANALYSIS THANK YOU